

These 5 works were **created during the first lockdown of 2020 during the weeks of the online course** and are part of a series of **10 portraits** created by a group of more than **280 students**. To these portraits, the originals of which were made by famous artists, was added the symbol of this historical era that we were living: the breathing protection masks!

Each student then chose a part of one of the portraits and interpreted it with the technique of his or her choice according to what was available at home (remember, the very first confinement: everything was closed and there was no possibility of going shopping to get equipment!): coloured pencils, pastels, acrylic paint, oil chalk, watercolour, collage, etc. Once finished, the A4 sheets were sent by post to be assembled into these majestic works.

The 10 portraits were exhibited in the glass tunnel over the entrance to the ESM for a year and now 5 of them have been professionally framed and are being auctioned for the benefit of the ESM's charity, the **Outreach Programm**, which supports initiatives at local Bavarian, European and international level.

To find out more about how these artworks were created, take a look at this video which tells the story: scan this QR-Code



If you would like to participate in the auction to benefit the **Outreach Programm**, the ESM's charity programme, you have two options:

- **from Tuesday 2 to Tuesday 9 May 2023**, you can bid **online** from anywhere in the world or
- **on Wednesday 10 May**, you can participate **in person** in the auction preceding the concert.

Bids for each of the 5 paintings start at €400 online and can be increased by €10. The auction will end online on Tuesday 9 May and will resume in person at the price reached by the online auction on Wednesday 10 May at 5.30 pm. If a bidder present on 10 May exceeds the online bid, he/she will win the auction. If not, the auction will be won by the online bidder who offered at least €400. If no bid reaches the minimum amount of 400€, the artwork remains the property of the ESM Art Section and Outreach Programm.

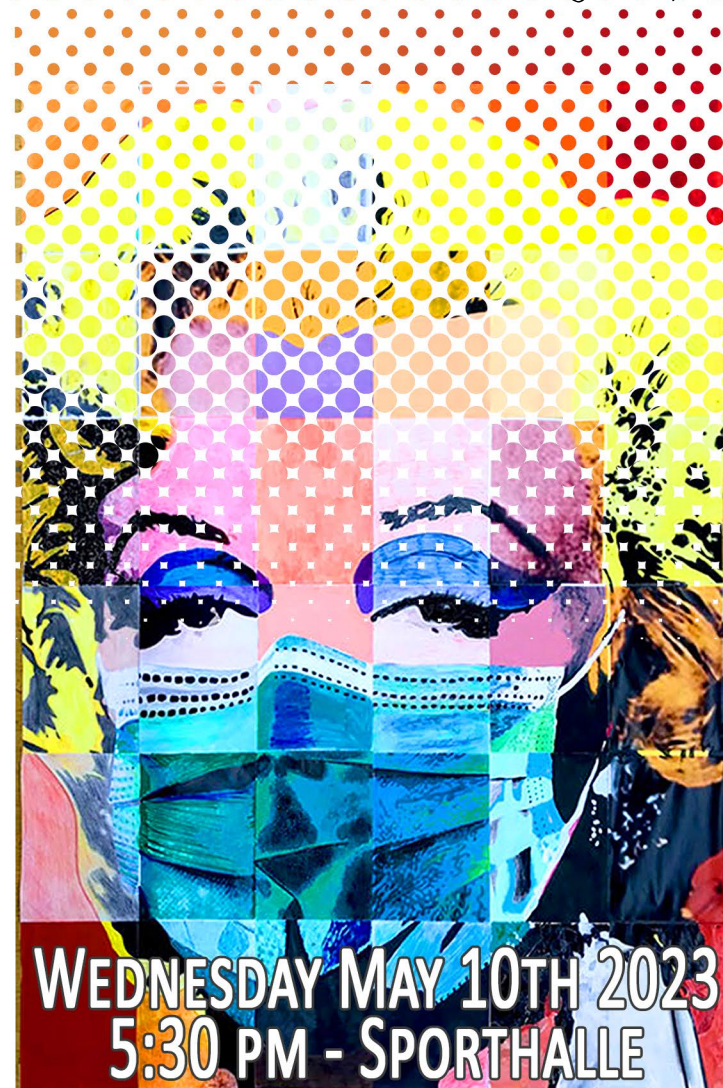


To bid, follow the link below or scan the QR-Code with a smartphone. Follow the instructions to register.

<https://app.galabid.com/esmcharityweek>

ESM - ELISE-AULINGER-STR. 21 - 81739 MUNICH

CHARITY ART AUCTION



WEDNESDAY MAY 10TH 2023
5:30 PM - SPORHALLE

EUROPEAN SCHOOL MUNICH



Artistic interpretation of the painting entitled "**Adele Bloch-Bauer I**" by the Austrian painter **Gustav Klimt** in 1907.



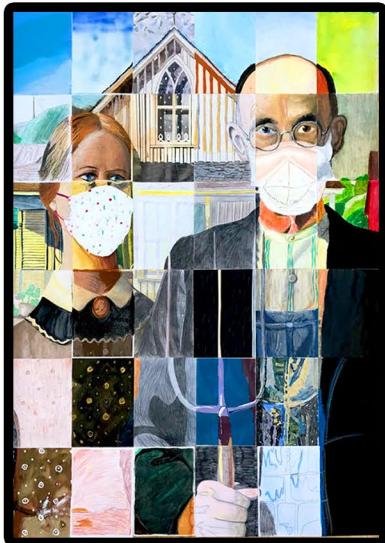
Artistic interpretation of the painting representing the dancer **Alexander Sacharoff** by the German-Russian painter **Alexej von Jawlensky** and painted in 1909.



Artistic & synthetic interpretation of the various silk-screen portraits of the actress **Marilyn Monroe** made in the 1970s by the US-American artist **Andy Warhol**.

CHARITY ART AUCTION FOR THE OUTREACH PROGRAMM EUROPEAN WEEK AT THE ESM

Artistic interpretation of the painting "**American Gothic**" painted in 1930 by the US-American painter **Grant Wood**.



Artistic interpretation of the photographical portrait of the Mexican painter **Frida Kahlo** taken by the American photographer **Nickolas Muray** in 1939.



All 5 artworks have been professionally framed with a plexiglass with a black painted wooden frame and a wooden back.

The frames measure approximately 1.80 x 1.30 m. Each work of art consists of 36 A4 sheets each made with various artistic techniques: gouache, watercolour, acrylic paint, pastels, crayons, collage, pencils, markers, ink, etc.

Each artwork will be delivered free of charge by the school's caretaker team in the Munich area and its suburbs.

Each work of art will be delivered with its certificate of authenticity.

A fee of 3% of the bid amount will be charged for the secure payment via the Galabid platform.

The ESM and the Outreach Programm reserve the right to continue to sell merchandise featuring these works for the benefit of the Outreach Programm (i.e. postcards and posters). The purchase of a work implies acceptance of these conditions.